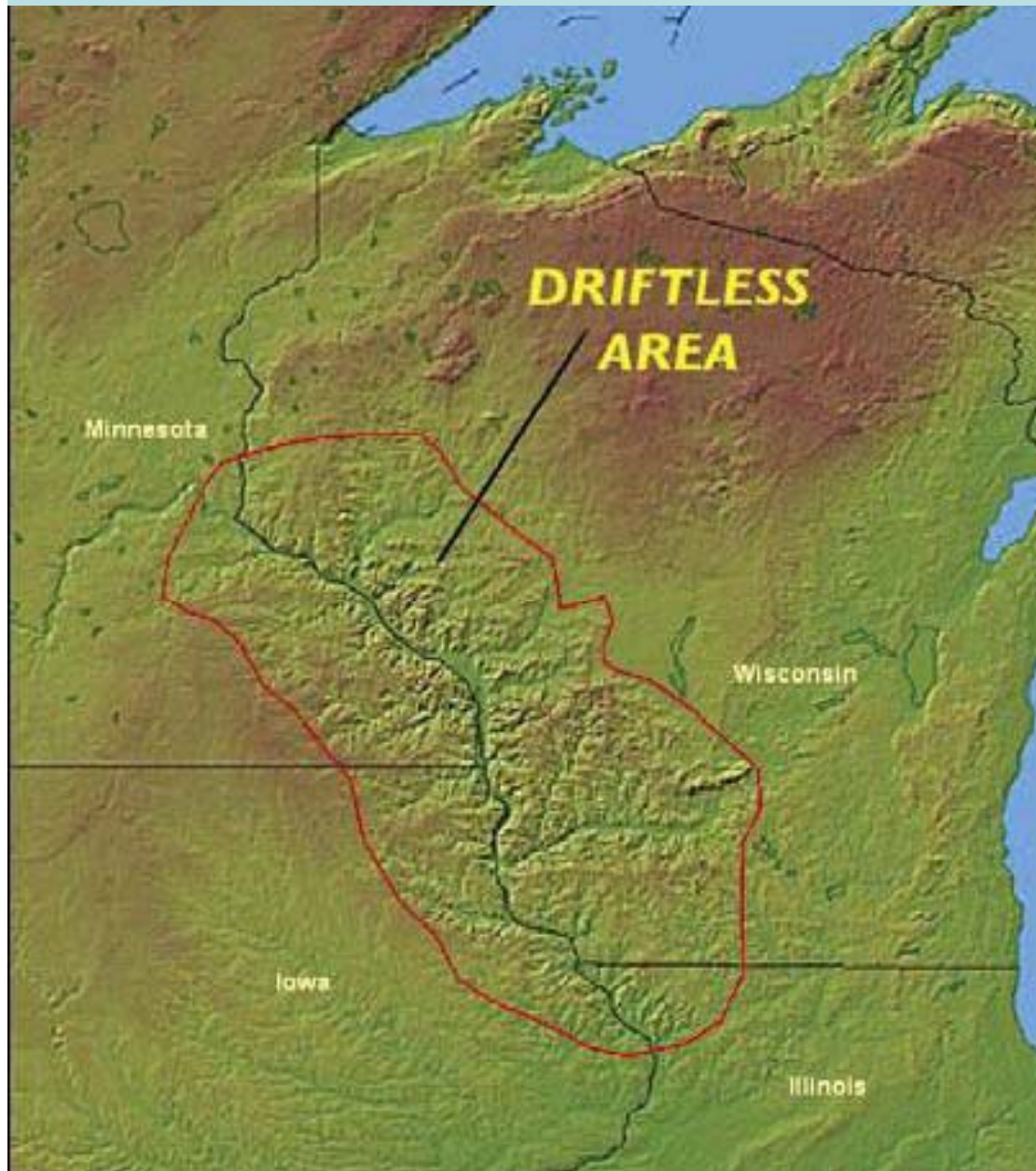


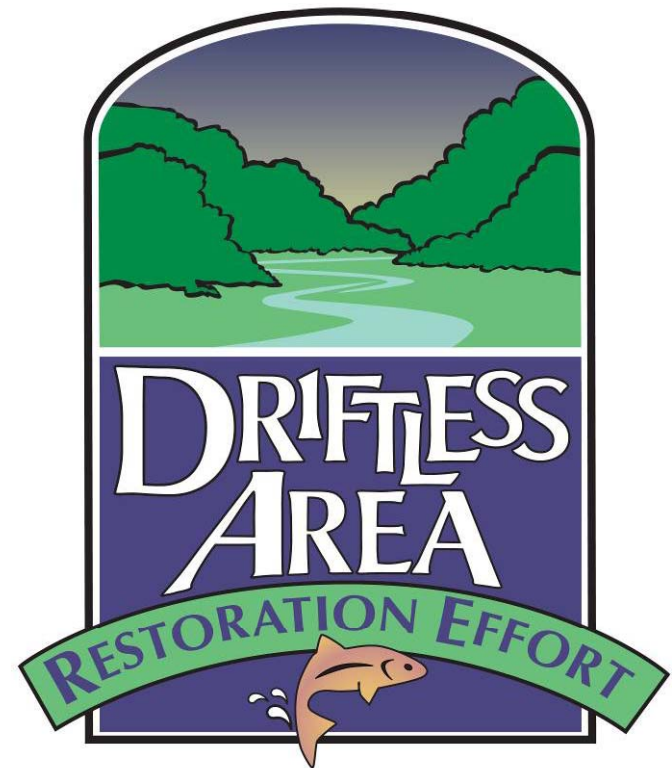
Accelerating toward maximum capacity



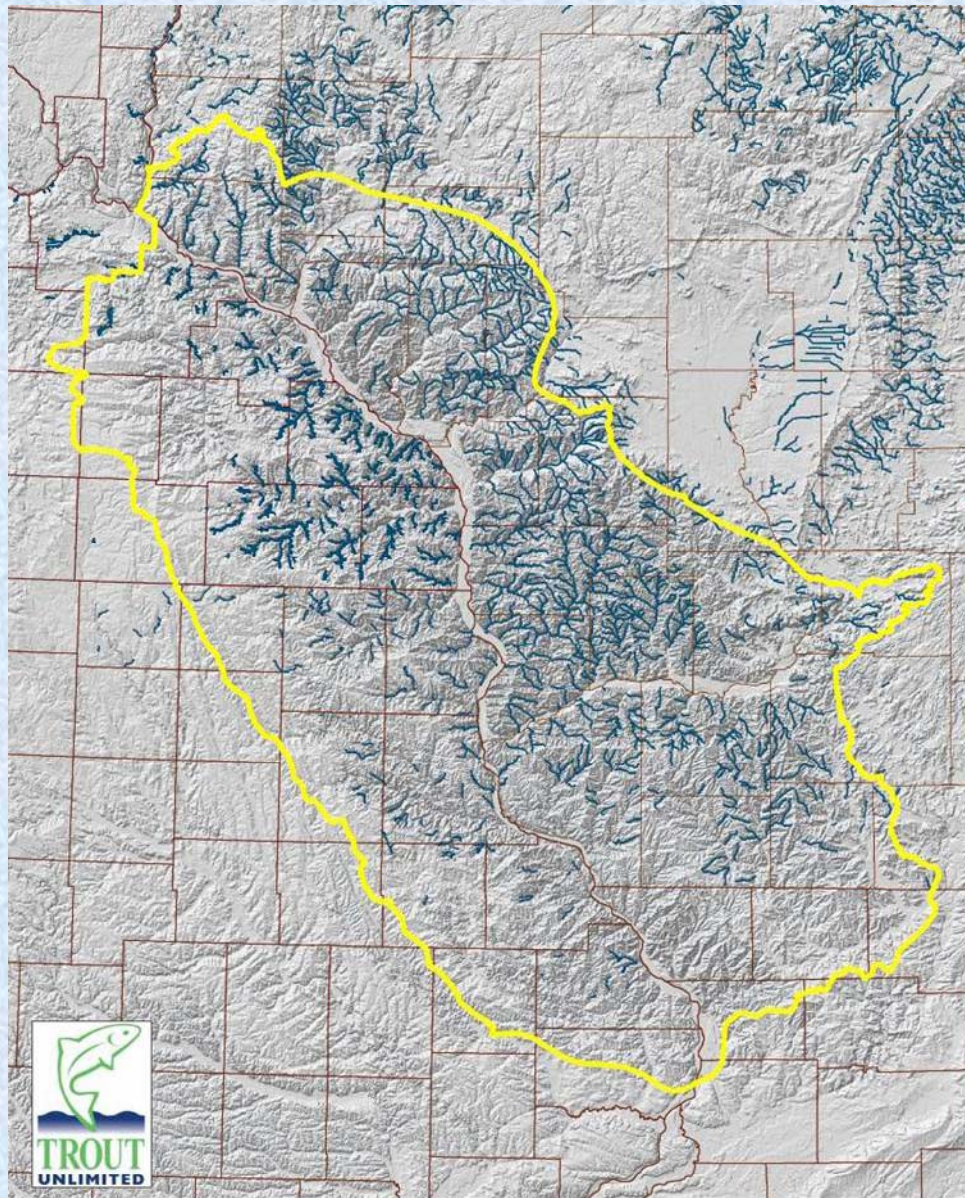
Jeff Hastings
Project Manager



Trout Unlimited – Driftless Area
Restoration Effort



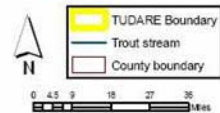




- 24,000 square miles
- >600 coldwater streams
- >3,500 miles



Trout Unlimited
Driftless Area Restoration Effort (TUDARE):
Geographic Extent



Because of its large size, I've purchased a new hybrid to get me around quicker....



Trout Unlimited's Driftless Area Restoration Effort



- Protect and restore habitat for fish and other species of interest to increase angling and other recreational opportunities
- Restore watershed health to reduce delivery of sediment and nutrients and improve water quality to benefit Driftless Area rivers and streams;
- Serve as a national model for landscape-scale community restoration and land protection efforts, and
- Promote sustainable rural economies.

Project Manager



- ***Passion for the work/cause.***
- Technical background
- Networking skills
- ***Partnership builder, not a bridge burner.***
- Outreach (publications, public speaking, web development).
- Grants Skills (& ability to track funds)
- ***Able to see the big picture.***
- Time management skills.

Accelerating toward maximum capacity



1. Technical
2. Funding
3. Outreach



Technical Training



- One-on-one
- Group Training



Private , NGOs, County (SWCD, LCD), State,
Federal (NRCS, RC&D).



Assessment....

- By state..by region
- By organizations



One-on-One

Questions

On the job

At their pace

At their level of expertise

Worth the time...

Group Training



- Most cost effective
- Everyone on the same page.
- Regional networking.
- Social
- Funding available





Group Training

Trout Unlimited Chapters

- 17 Chapters (Chic.)
- 4 years (two tiers)
- Social (Spring timed with opener, fish tale story)
- Relevant (workdays, grants, liability, easements, monitoring).
- Handout materials
- Time (weekends, volunteers)
- Instruction (piers, profess.)
- Travel (over night)
- Demonstrate (tour, PowerPoint, handouts)
- Success – SE golden trout – workdays, Chic. \$40,000, Coulee - \$120,000, partnerships, other conservation groups.

Stream Restoration – Group Training



- Instruction (profess., coworkers,)
- Travel (Regional)
- Demonstrate (various conservation practices)
- Handout Materials



Stream Restoration – Group Training



- **Social** (lunch, stream shocking demo.)
- **Relevant** (programs they administer, typical project).
- **Time** (during the week, less than a day)
(funding, current projects, little effort)



Contractors Training



- Timing
- Current job/DNR
 - Demonstrate
 - Review Designs
- Handouts
- Bidding – time, materials
- Everyone on the same page



*Merry Christmas and
Happy New Year*



Funding/Grants



- **Eyes wide open** (how did you catch that fish)
- **Timeline** (available, implement)
- **Contacts** (administrator)
- **Does it meet your needs**
- **Criteria** (scoring)
- **Administrative time**
- **Acquire examples of successful past projects**
- **Follow-up on unsuccessful applications** (grants are typically annual)

Funding/Grants



- **Eyes wide open** (how did you catch that fish)
- **Does it meet your needs**
- **Timeline** (available, implement)
- **Contacts** (administrator)
- **Criteria** (scoring)
- **Administrative time**
- **Acquire examples of successful past projects**
- **Follow-up on unsuccessful applications** (grants are typically annual)

Top five



- **Innovative**
- Ready**
- Maximize**
- Active**
- Connected**



[DRIFTLESS RIPARIAN]

Habitat Guide



Stream Bottom

Key

1/2 Channel Width

1/2 Channel Width

1/2 Channel Width

Key

Water Edge

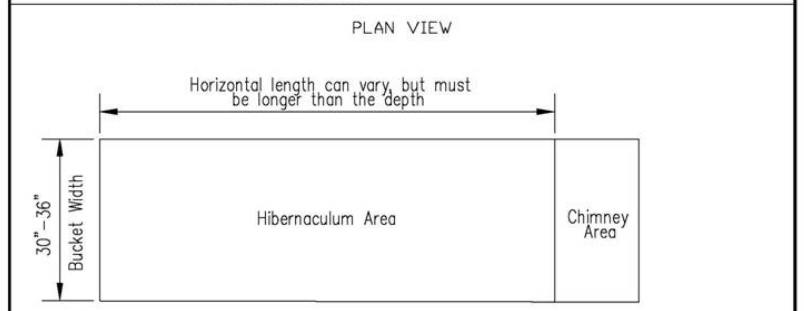
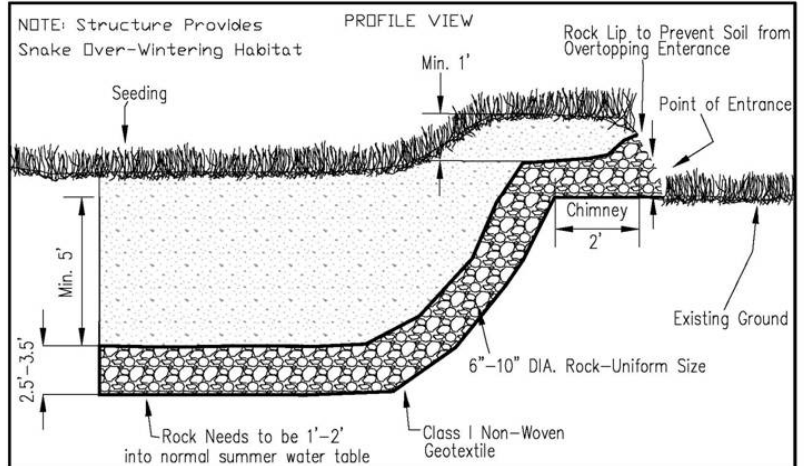
1/2 Channel Width

Primary Flow Area

Rock Plug to Prevent
from Scouring Back



NRCS CHANNEL LOG (DETAILS)
PAGE 1 OF 1



1. Hibernaculum should be placed out of the primary floodplain with a southern or western exposure.
2. A minimum of five feet of earth fill shall cover the rock—this acts as a buffer to maintain a hibernaculum temperature of at least 51 degrees Fahrenheit.
3. A soil berm may be required to isolate the hibernaculum from the river bank, to be flagged by technician in the field.



Snake HIBERNACULUM (DETAILS)
Page 1 of 1

CLIENT: _____
COUNTY: _____

Designed by: _____	Date: _____	Drawing No. _____
Drawn by: _____	Date: 01/2007	Sheet _____
Checked by: _____	Approved by: _____	OF _____



UNLIMITED



Top five

Innovative

• **Ready**

Maximize

Active

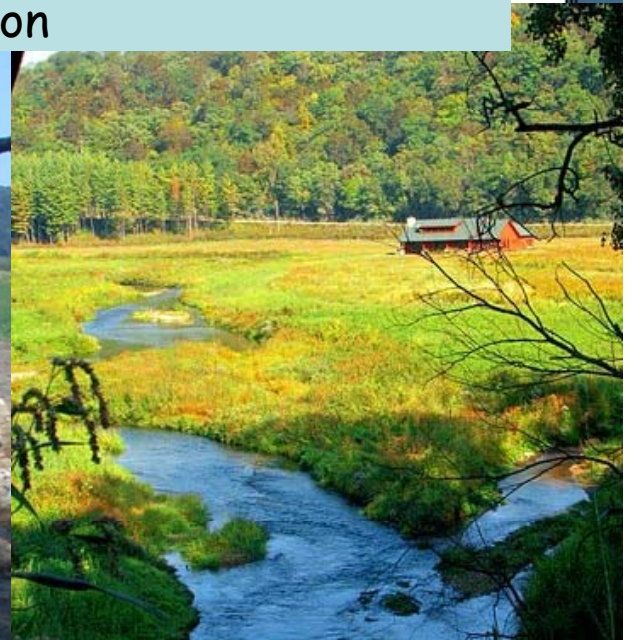
Connected



Sitting in a 3.8-metre sea kayak and watching a four-metre great white approach you is a fairly tense experience



Driftless Area Cooperative Conservation Partnership Initiative Streambank Stabilization, Trout and Non-game Habitat \$350,000/yr five year \$1.75 million



Top five

Innovative

Ready

• **Maximize**

Active

Connected





 NRCS

Wildlife Habitat Incentive Program

- The Wildlife Habitat Incentives Program (WHIP) is a voluntary program for people who want to develop or improve wildlife habitat on private lands. The WHIP Program offers technical and financial assistance to help protect, restore, develop and enhance fish and wildlife habitat.

State WHIP committee

- Sets priority areas
- Criteria
- Percentage



WI WHIP Practice Summary- FY2009

Practices	Funding	% of funding
Brush Mgm't (322)	\$43,580	4.10%
Conservation Cover (327)	\$51,019	4.79%
Stream-related*	\$866,437	81.42%
Prescribed Burning (338)	\$61,388	5.77%
Fence (382)	\$2,026	0.19%
Firebreak (394)	\$9,924	0.93%
Field Border (386)	\$4,173	0.39%
Pest Mgm't (595)	\$14,710	1.38%
Tree/Shrub Est. (612)	\$563	0.05%
Wetland Wldlf. (644)	\$7,212	0.68%
Upland Wldlf (Hiber.) (645)	\$695	0.07%
Forest Stand Improvement (666)	\$2,475	0.23%
Total	\$1,064,202	100%



Building the capacity...helps to maximize the funding.

Top five



Innovative

Ready

Maximize

• **Active**

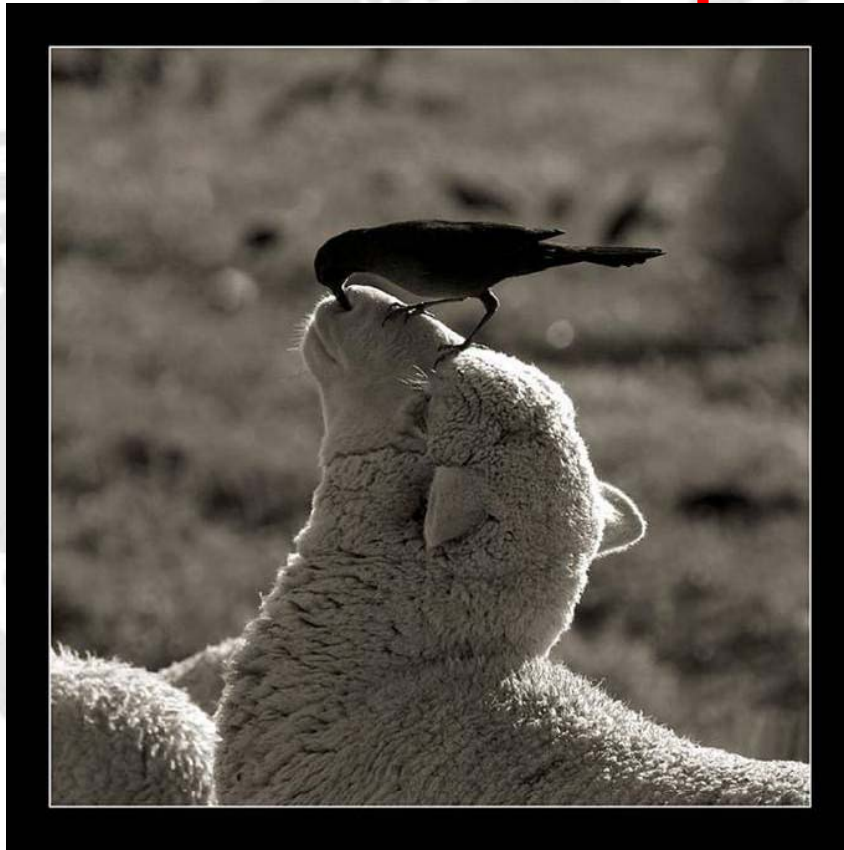
Connected



COUNTY	PRACTICE	COUNT	PLANNED AMOUNT	OBLIGATED AMOUNT
ALLAMAKEE	Streambank and Shoreline Protection	10	5,849	\$148,135.00
CLAYTON	Streambank and Shoreline Protection	7	3,645	\$125,781.00
Clinton		0		
DELAWARE	Streambank and Shoreline Protection	3	1,390	\$28,590.00
DUBUQUE	Streambank and Shoreline Protection	1	300	\$2,401.00
Fayette		0		
HOWARD		0		
JACKSON	Streambank and Shoreline Protection	1	260	\$2,880.00
Total FY09 WHIP Iowa		25	12,694	\$348,540.00



Top five



Innovative

Ready

Maximize

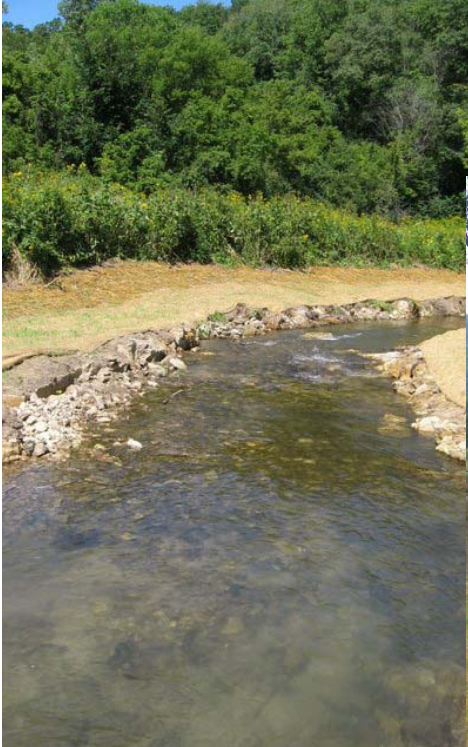
Active

• **Connected**





**ENVIRONMENT
AND NATURAL RESOURCES
TRUST FUND**

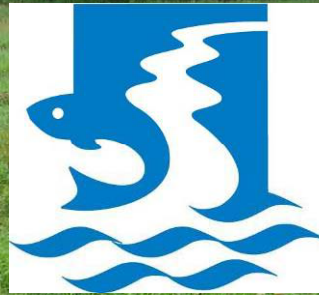


Lessard-Sams Outdoor Heritage

2 million - 14 miles



1. Hay Creek (Goodhue);
2. Kabekona Creek (Hubbard);
3. Lawndale Creek (Wilkin);
4. Little Rock Creek (Benton);
5. Middle Branch of Whitewater River (Olmsted);
6. Mill Creek (Fillmore);
7. Pickwick Creek (Winona);
8. Trout Run Creek (Fillmore);
9. Straight River (Becker & Hubbard);
10. Sucker River (St. Louis);
11. Vermillion River (Dakota).



NATIONAL[®]
FISH HABITAT
ACTION PLAN

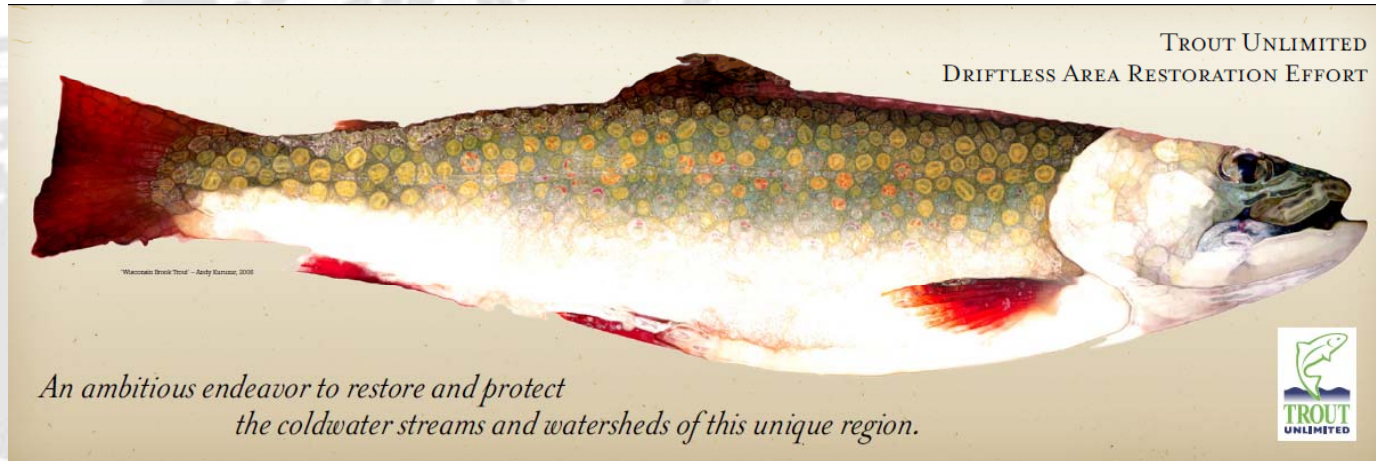


Developing a Constituency for the Driftless Area



© 2008
a Weber

Developing a Constituency for the Driftless Area



WHY IS IT CALLED THE DRIFTLESS AREA?



When glaciers retreat they leave behind deposits of dirt, gravel and rock called drift. Since the glaciers did not occupy this area of Wisconsin, Minnesota, Iowa, and Illinois, it is "drift-less." The landscape is characterized by craggy limestone and sandstone valleys, steep hillsides and abundant coldwater springs. More than 600 spring creeks interlace the 24,000 square-mile landscape and drain into the Mississippi River. The streams support populations of native brook trout and wild brown trout.



WHY A NEED FOR RESTORATION?

Early European settlement and agricultural practices took a heavy toll on the Driftless Area, resulting in devastating erosion, frequent flooding, and serious damage to rivers and local communities. Improved land use practices and conservation efforts have helped heal the land, but the legacy of past damage is still visible in the sediment-filled valleys and steep, eroding stream banks. Today, advanced agricultural practices and new land use demands afford additional conservation challenges.

HOW DID THIS PROJECT GET STARTED?

Trout Unlimited Driftless Area Restoration Effort (TUDARE) is a result of the good work and commitment of Trout Unlimited (TU) volunteers. In recent years, over 15 chapters within and around the region have worked with agency partners to restore sections of approximately 60 streams.

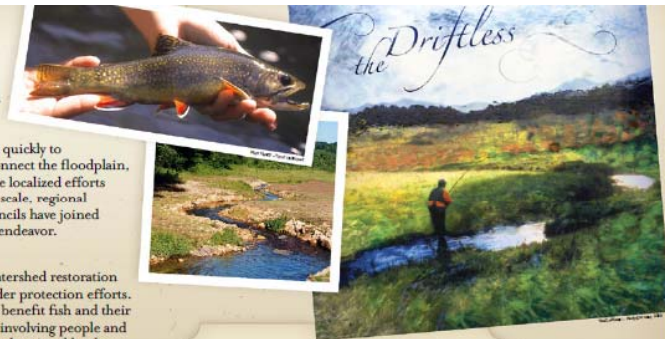
The rivers and fishery have responded strongly and quickly to straightforward techniques to control erosion, reconnect the floodplain, and improve in-stream habitat. The success of these localized efforts demonstrates the tremendous potential for a large-scale, regional restoration effort. Local TU chapters and state councils have joined forces with the National Office to launch this bold endeavor.

WHAT IS HAPPENING NOW?

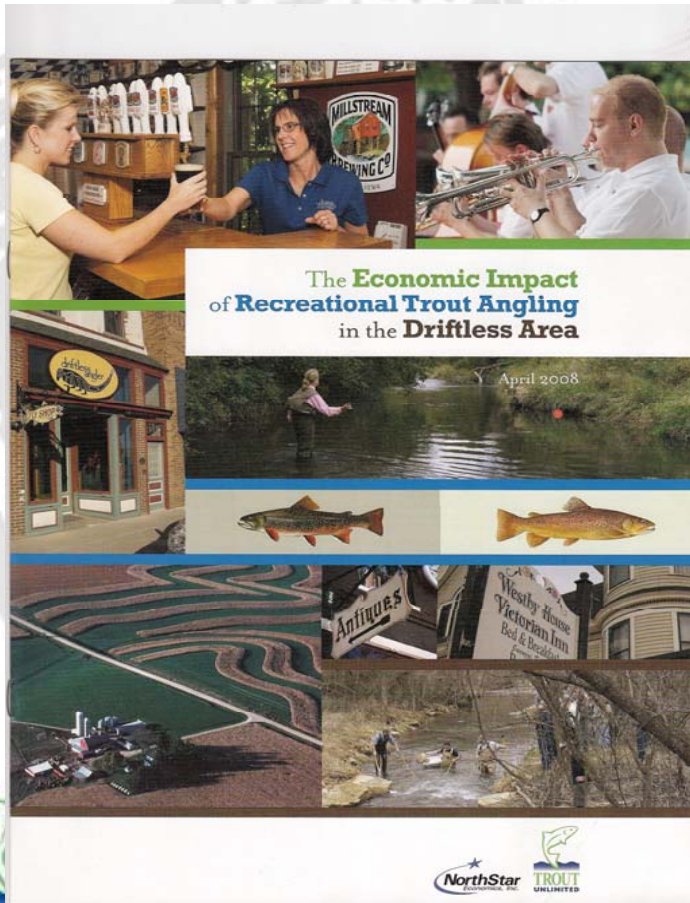
We are working to greatly increase the amount of watershed restoration activity within the Driftless Area and link it to broader protection efforts. Our goals are to reduce soil erosion and pollution, benefit fish and their habitat, and expand recreational opportunities. By involving people and collaborating with organizations at the local, state and national levels, we are creating a regional and national constituency for Driftless Area restoration. Through our work, we hope to foster local capacity for long-term advocacy and restoration efforts.

HOW CAN I HELP?

It's simple. Join your local chapter and volunteer for projects. Sign up for email newsletter updates. Donate. To do any of these or get more information about TUDARE visit our website at: www.tu.org/driftless



Developing a Constituency for the Driftless Area



TROUT
UNLIMITED



1.1 Billion Economic benefit to the local economy.

