

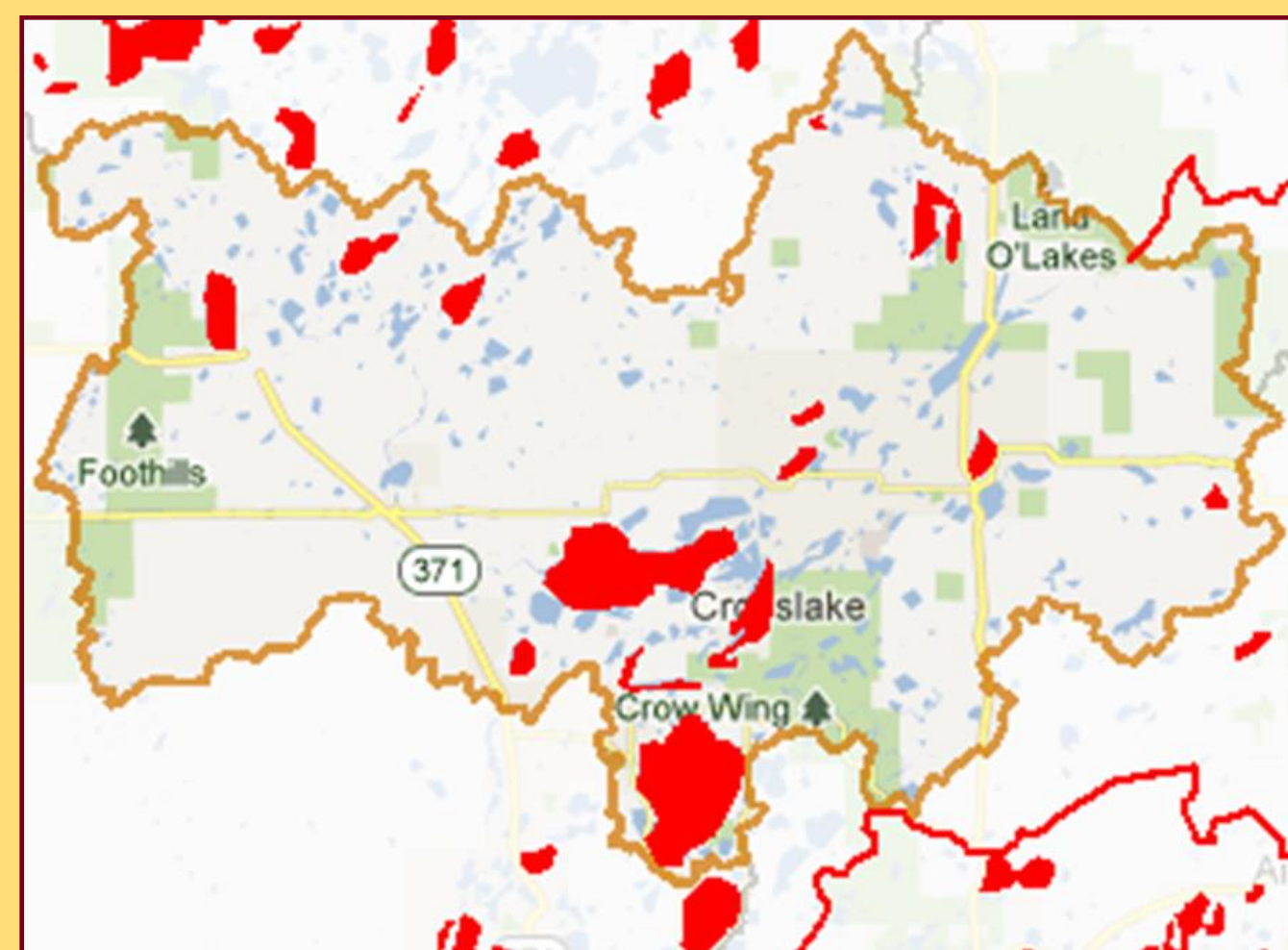
# Watershed Education Program: Assisting communities with watershed education and planning



UNIVERSITY OF MINNESOTA | EXTENSION

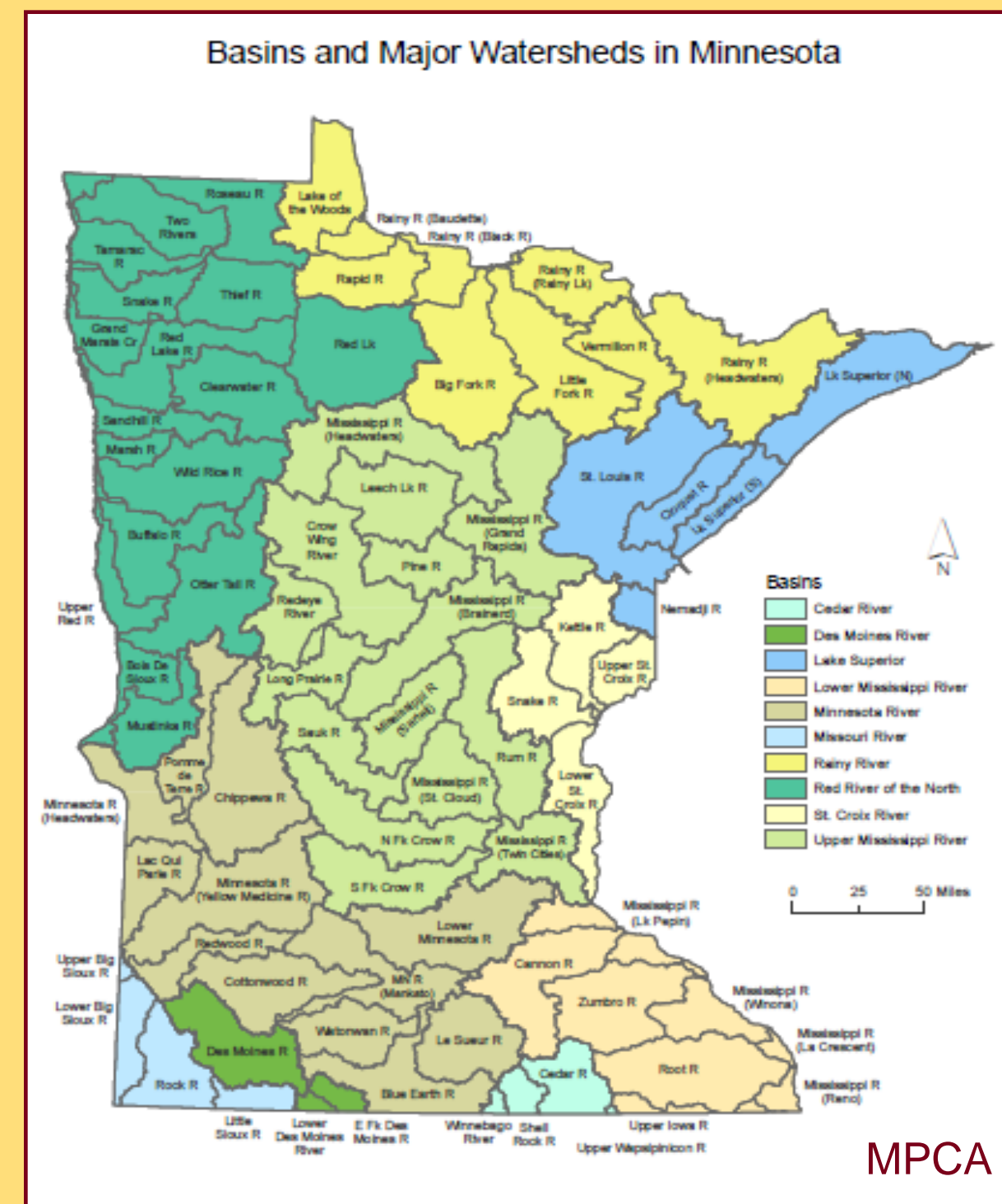
**Need:** There are 81 watersheds in Minnesota that are unique and have highly variable needs.

Watershed and political boundaries do not match up.



Pine River watershed showing impairments (red) and county boundaries (yellow) - MPCA 2012

Local government units (LGUs) have limited resources to address water quality and quantity issues.



Water quality assessments have shown that there are 3,638 lakes, rivers and streams with identified impairments in Minnesota. Mitigation plans are lacking for more than 2,100 of these, and in many cases LGUs are not well prepared to create those plans.

**Response:** Extension is well positioned to assist communities and local leaders in addressing these issues within a watershed framework.

The Watershed Education Program's goal is to equip stakeholders with knowledge and tools to make informed decisions to protect and restore Minnesota's waters through:

- assisting community leaders to identify their community's specific learning needs, and
- offering physical and biological science education and assistance with stakeholder involvement, planning, and policy development.

**Partners:** Extension's Leadership and Civic Engagement Program, Minnesota Pollution Control Agency, Minnesota Department of Natural Resources, local government units and others.

**What's Next:** This new program will be piloted in 2013 in two or three watersheds. After initial evaluation, the program will be altered as needed and then launched statewide.

